



FULLERTON
SCHOOL
DISTRICT



District English Language Advisory Committee

April 26, 2019



welkom

witaj

Bienvenue

salve

hoşgeldiniz

velkommen

Welcome

wilkom

välkommen

добро
позаловать

bonveno

willkommen

ようこそ

benvenuto

vitejte

bienvenido

Translation

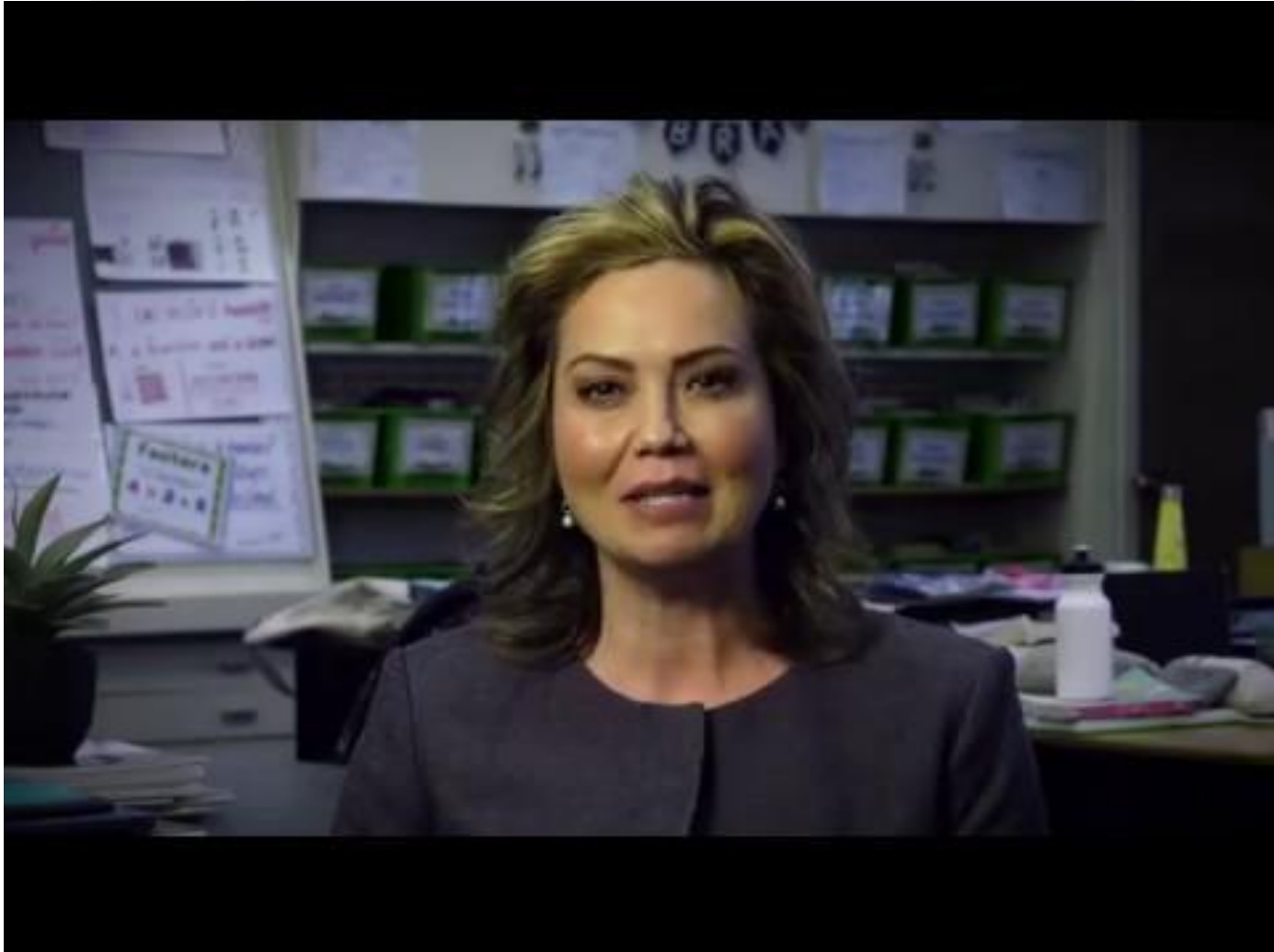
- Spanish - Channel 1
- Korean - Channel 2





ACACIA

ELEMENTARY
SCHOOL



Approve Minutes



Fullerton School District
**Master Plan for
English Learners**



**A Program Designed for
Academic Excellence**

Government & Administration

- ▶ Home Language Survey
- ▶ Testing procedures
- ▶ Initial Title III Letters
- ▶ Annual Title III Letters

Services to Support English Learner Students

- Student Interventions
- English Language Development
- Parent Involvement
- Staff Development
- Instructional Materials



Reclassification

Criteria for Grades 1-3

- ELPAC: Overall Score of 4
- District Benchmark ELA- “At grade level” or Proficient
- FSD Writing: Score of 3 or higher on most recent writing assessment
- Teacher evaluation of student academic performance
- Parent opinion and consultation

Reclassification

Criteria for Grades 4-8

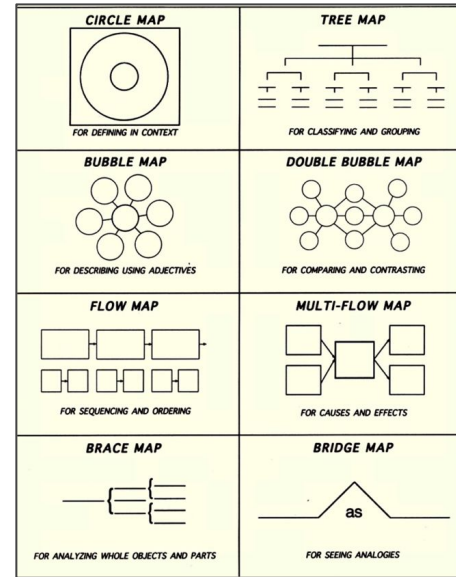
- ELPAC: Overall Score of 4
- SBAC: Mid Level 2* (Standard Nearly Met) on ELA SBAC
- FSD Writing: Score of 3 or higher on most recent writing assessment
- Teacher evaluation of student academic performance
- Parent opinion and consultation

Standards, Assessment and Accountability

Monitoring

- Students must be monitored for success for a minimum of four years
- Teachers monitor English Language Arts assessments
- Classroom performance
- Report card grades

Staffing and Professional Development



Opportunity and equal Education Access

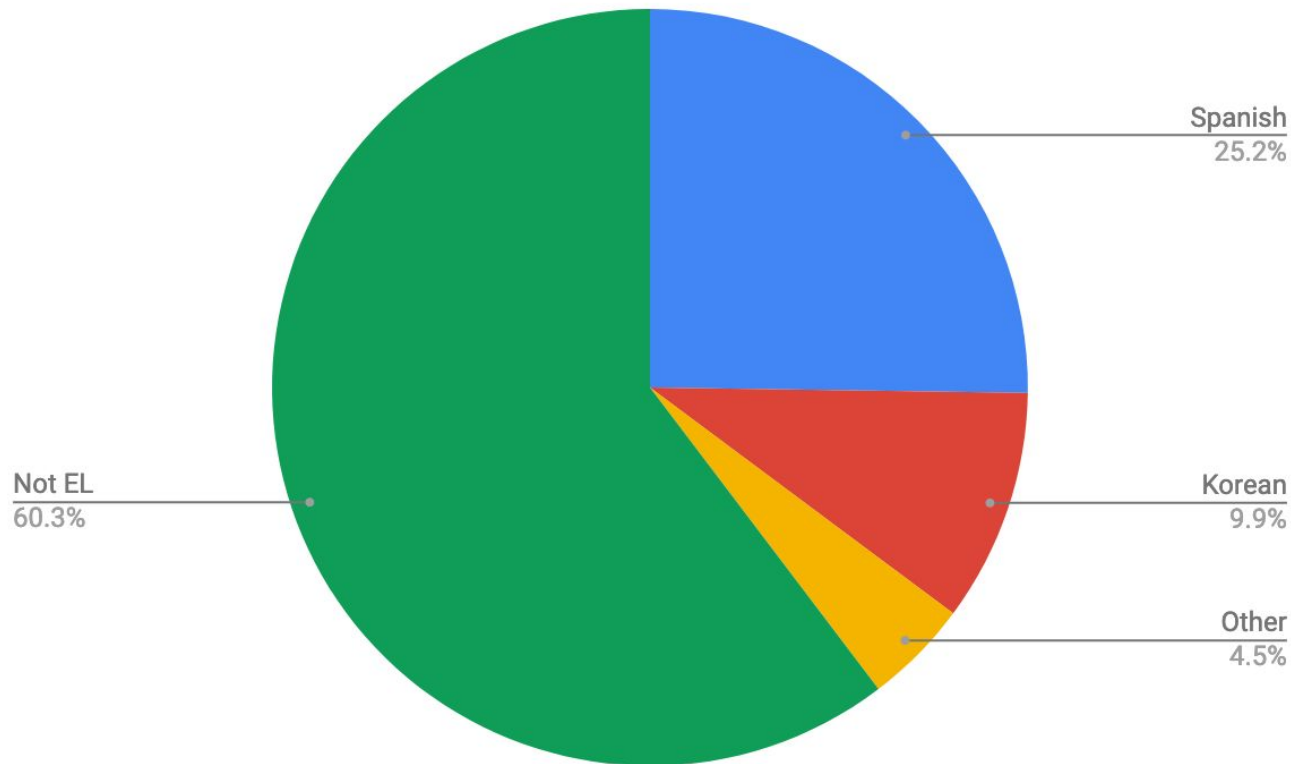
Structured English Immersion (SEI)

- ▶ A language acquisition program for English learners in which nearly all classroom instruction is provided in English, but with curriculum and a presentation designed for pupils who are learning English.
- ▶ At minimum, students are offered ELD and access to grade level academic subject matter content.

Alternative Program (ALT): Dual Language

- ▶ Also referred to as Two-Way Immersion.
- ▶ A language acquisition program that provides language learning and academic instruction for native speakers of English and native speakers of another language, with the goals of high academic achievement, first and second language proficiency, and cross-cultural understanding.
- ▶ This program begins in Kindergarten and continues to eighth grade.

Percent of Total Enrollment that is EL and FEP



September 20, 2019- Richman

December 13, 2019- Ladera Vista

February 21, 2020- Fisler

April 24, 2020- Orangethorpe





IMPORTANT
ANNOUNCEMENT



THANK YOU

for participating in
DELAC this year!



DELAC
Community
Resource Fair

April 26, 2019